

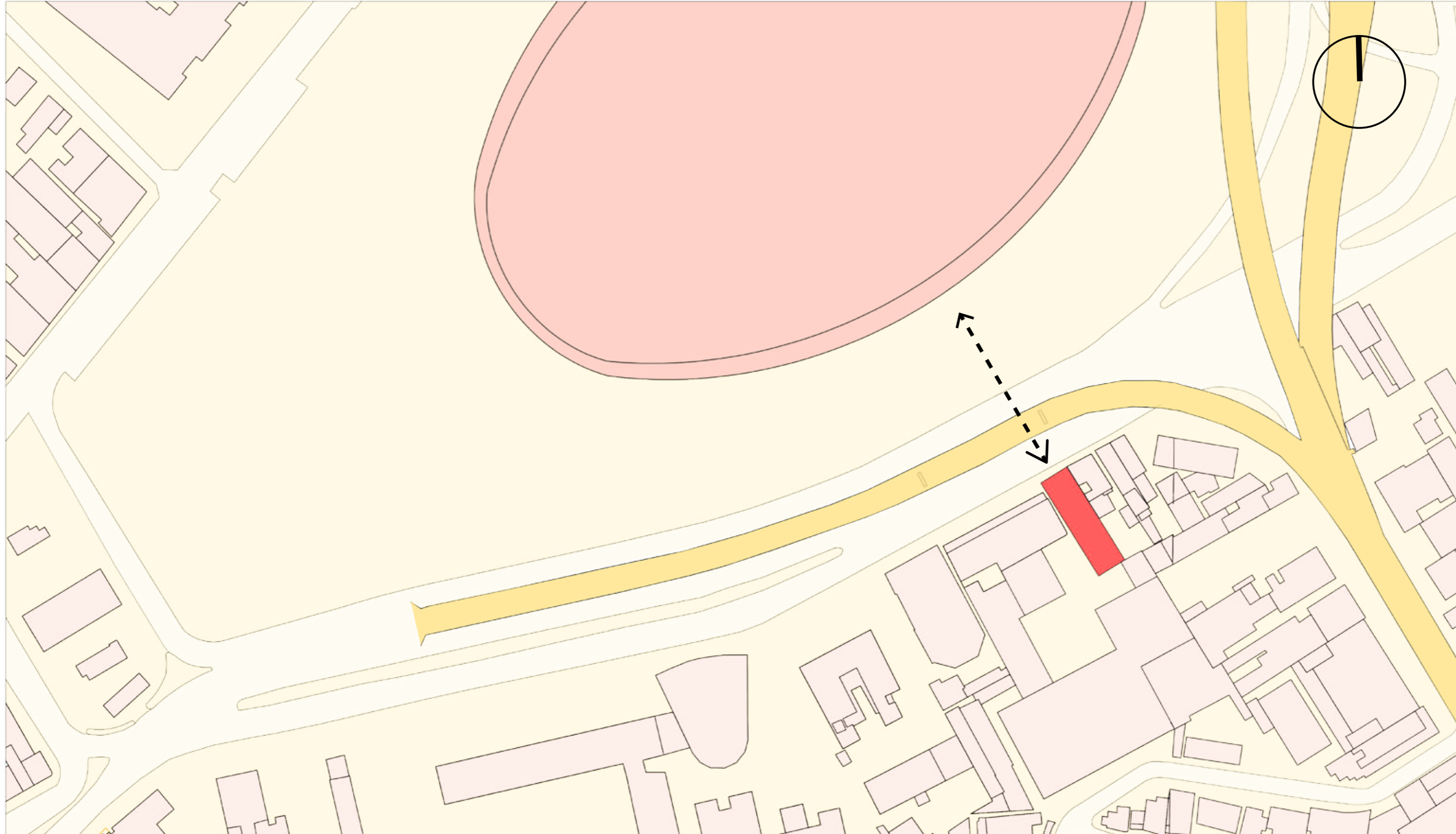


PROJETO RESIDENCIAL SÃO CRISTÓVÃO

Gabriella Nucara

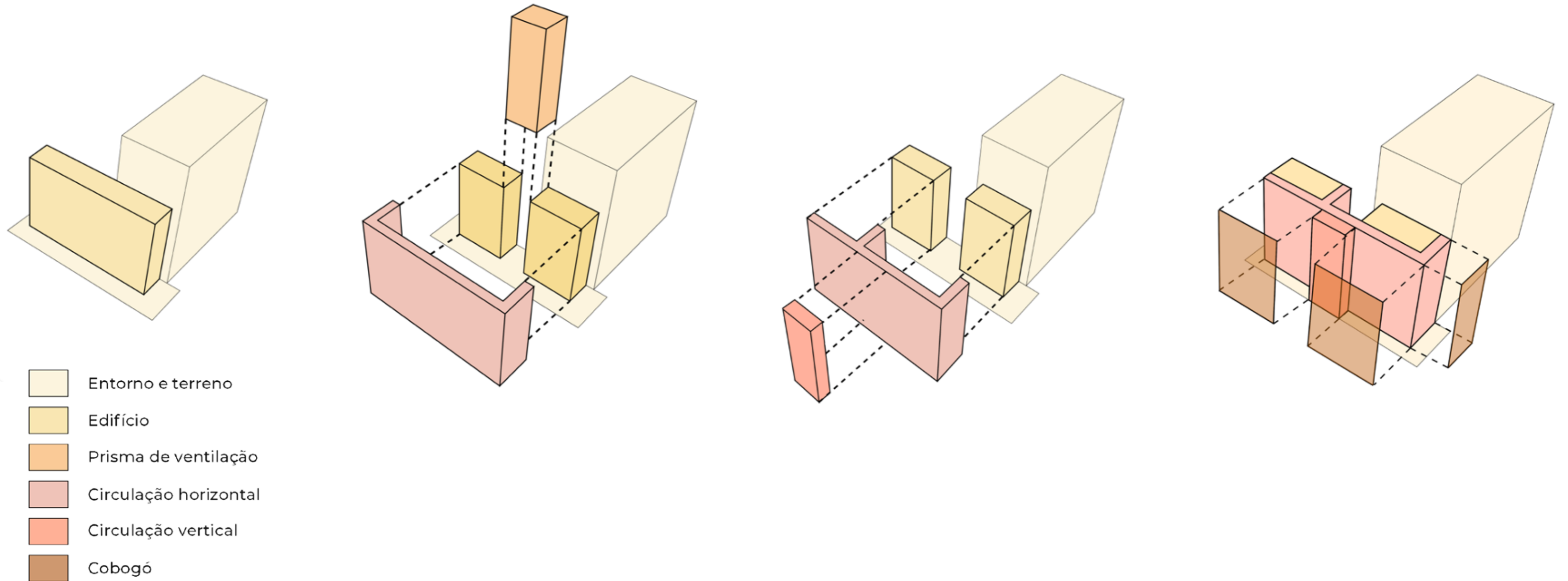
# PLANTA SITUAÇÃO

Conexão visual

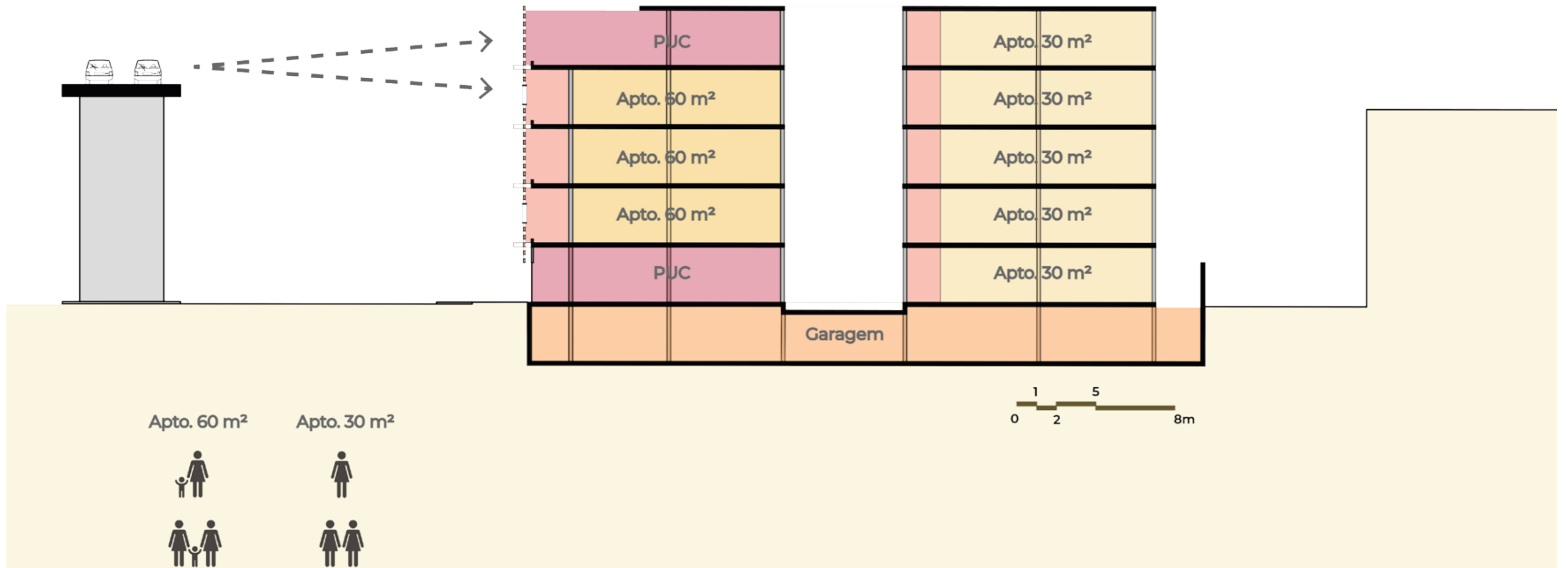


# DIAGRAMA DESENVOLVIMENTO PROJETO

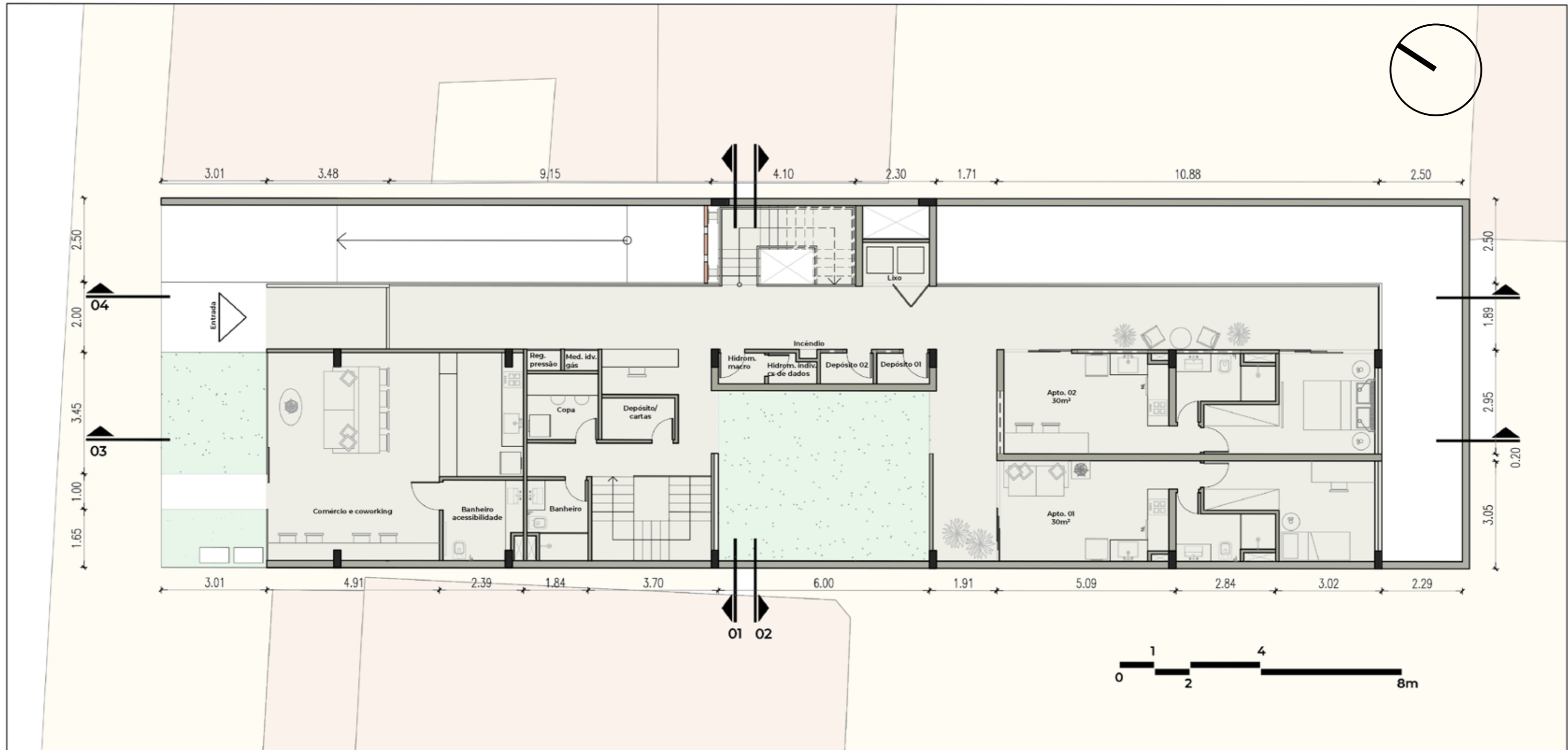
Considerando o entorno em que o terreno está inserido, o projeto foi desenvolvido a partir de 3 prismas principais: ventilação cruzada, para um melhor conforto térmico; Corredores-varanda, permitindo a extensão dos apartamentos e um afastamento do seu entorno; Cobogó, elemento da arquitetura popular brasileira utilizado como filtro.



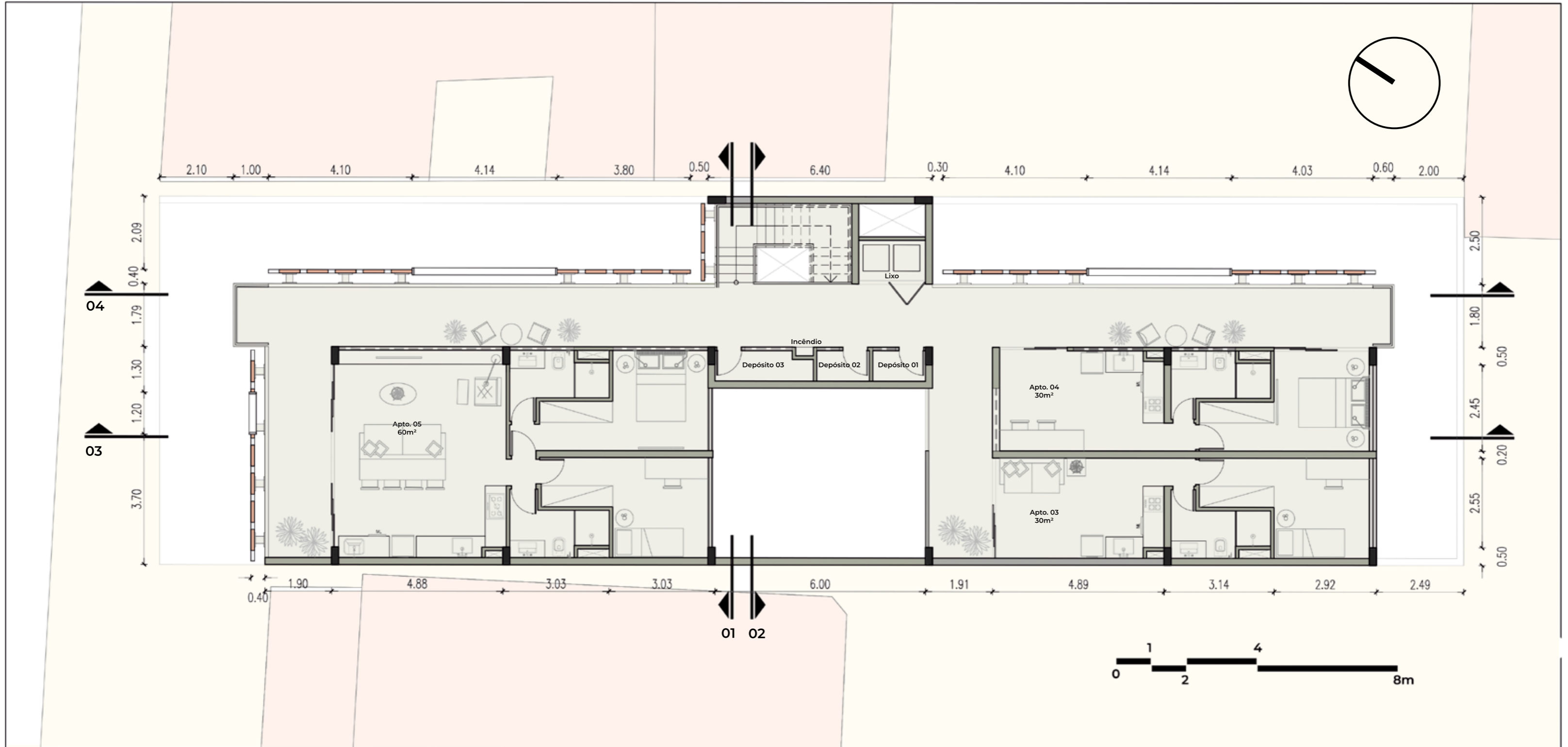
# ESQUEMA TIPOLOGIAS



# PLANTA PAV TÉRREO

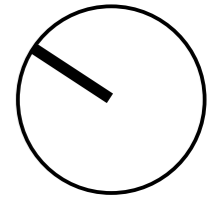


# PLANTA PAV TIPO

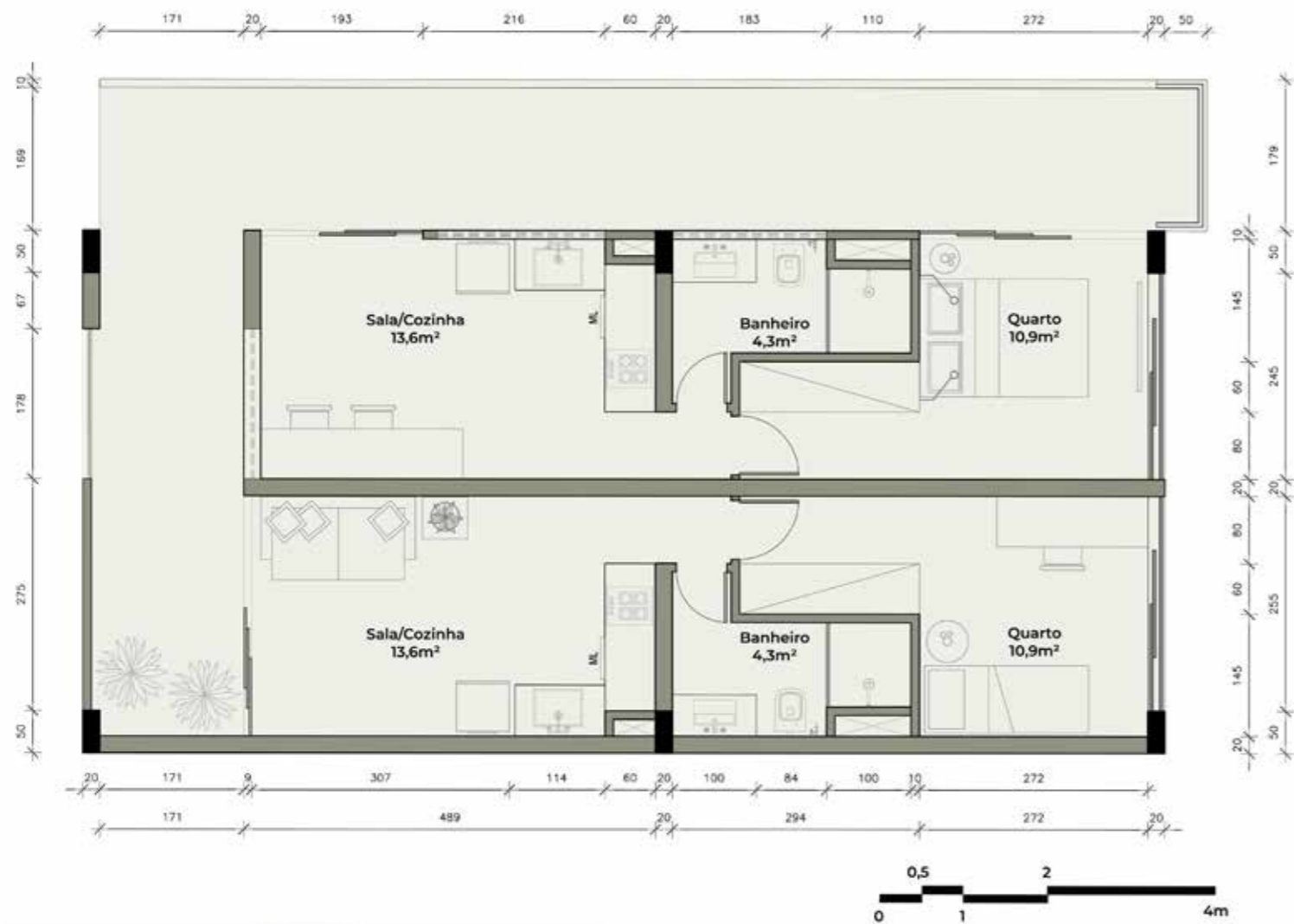


# PLANTA APARTAMENTOS

Flexibilidade de composição



Apto. 30m<sup>2</sup>

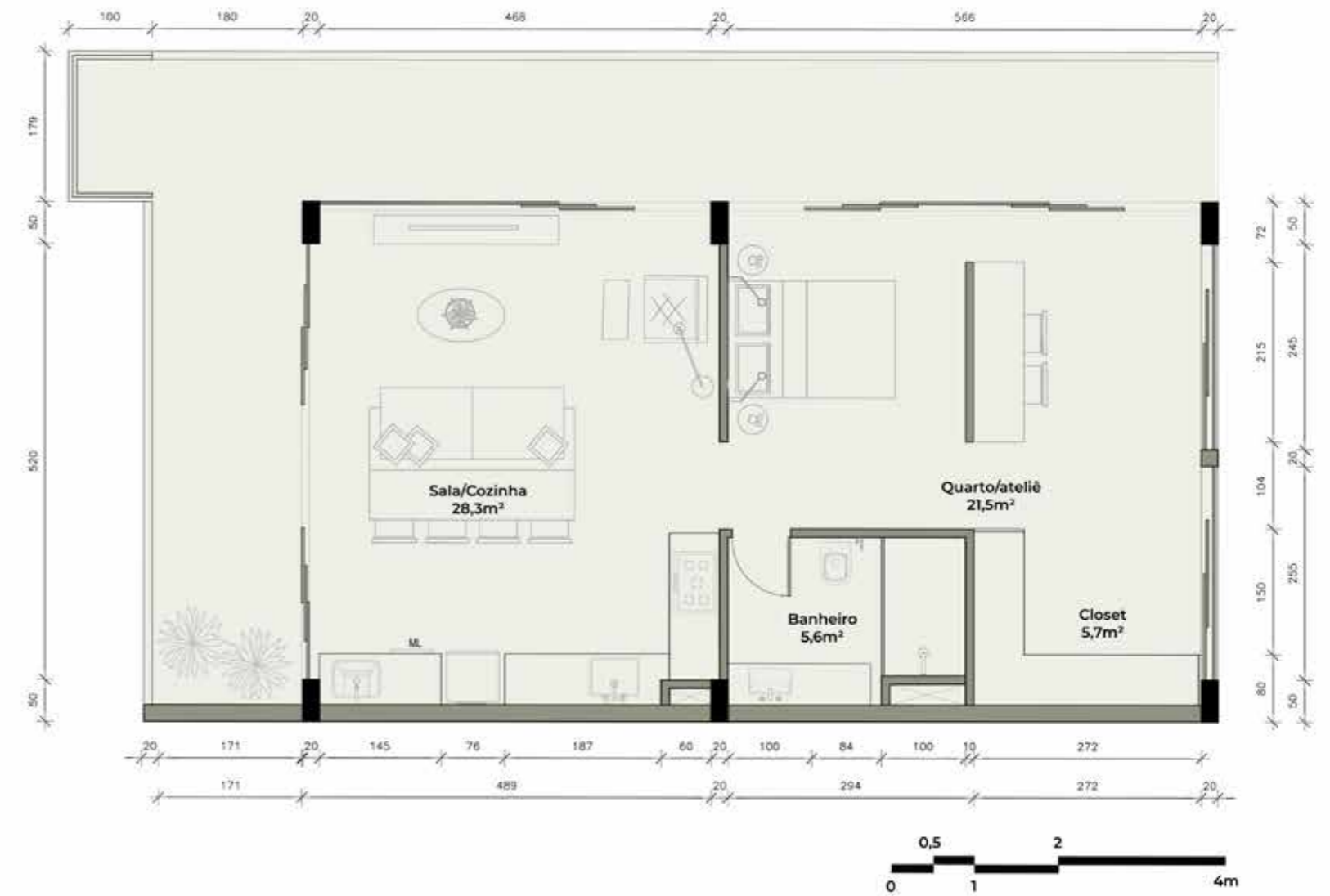
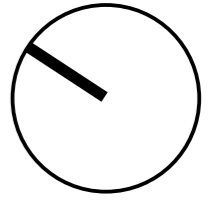


Apto. 60m<sup>2</sup>



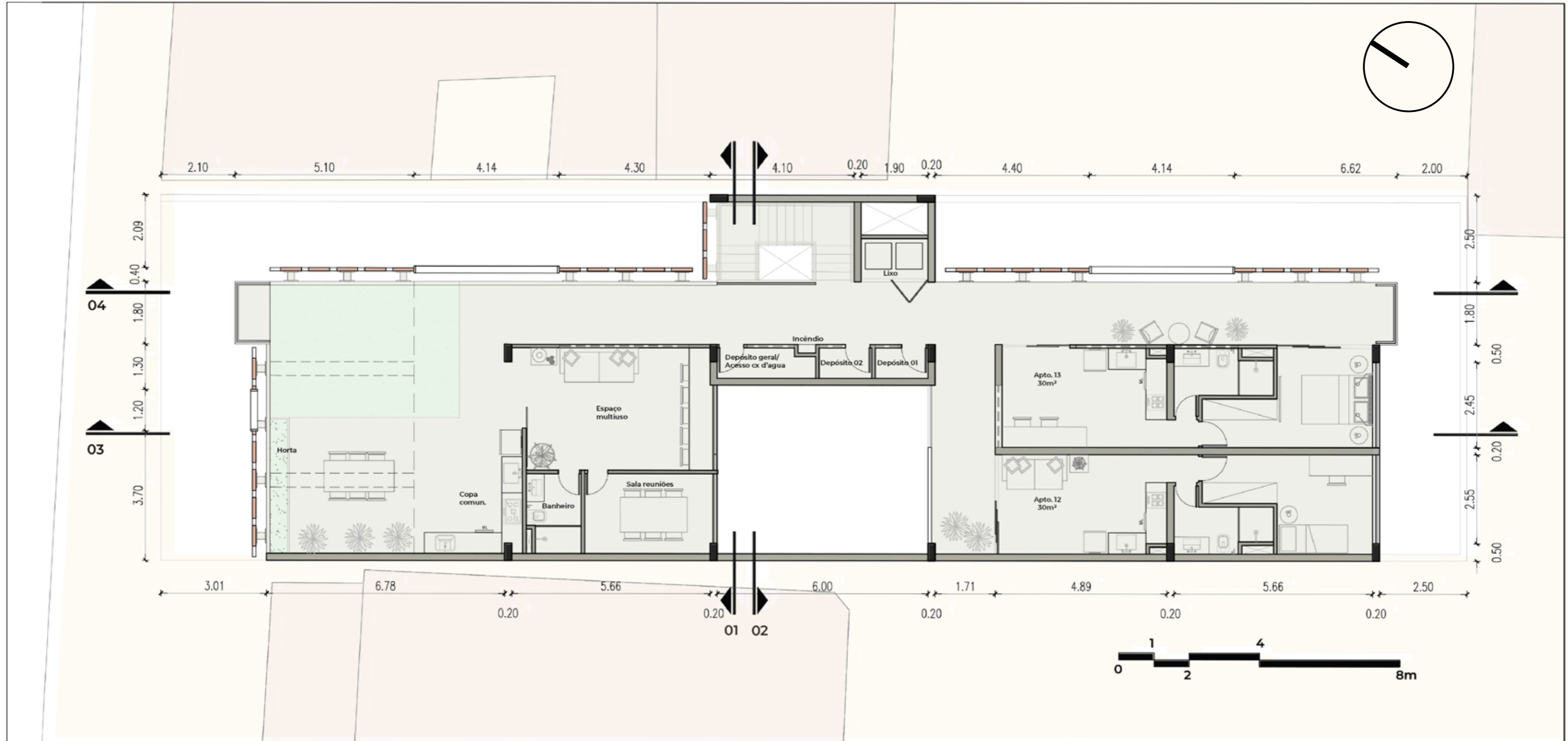
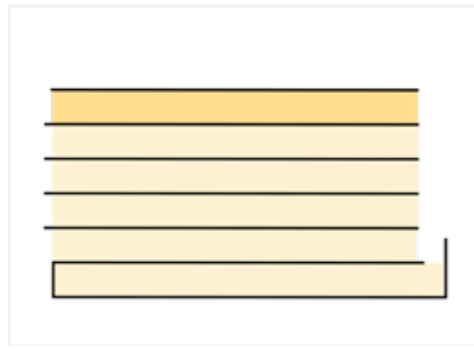
# PLANTA APARTAMENTOS

Outras possibilidades de layout

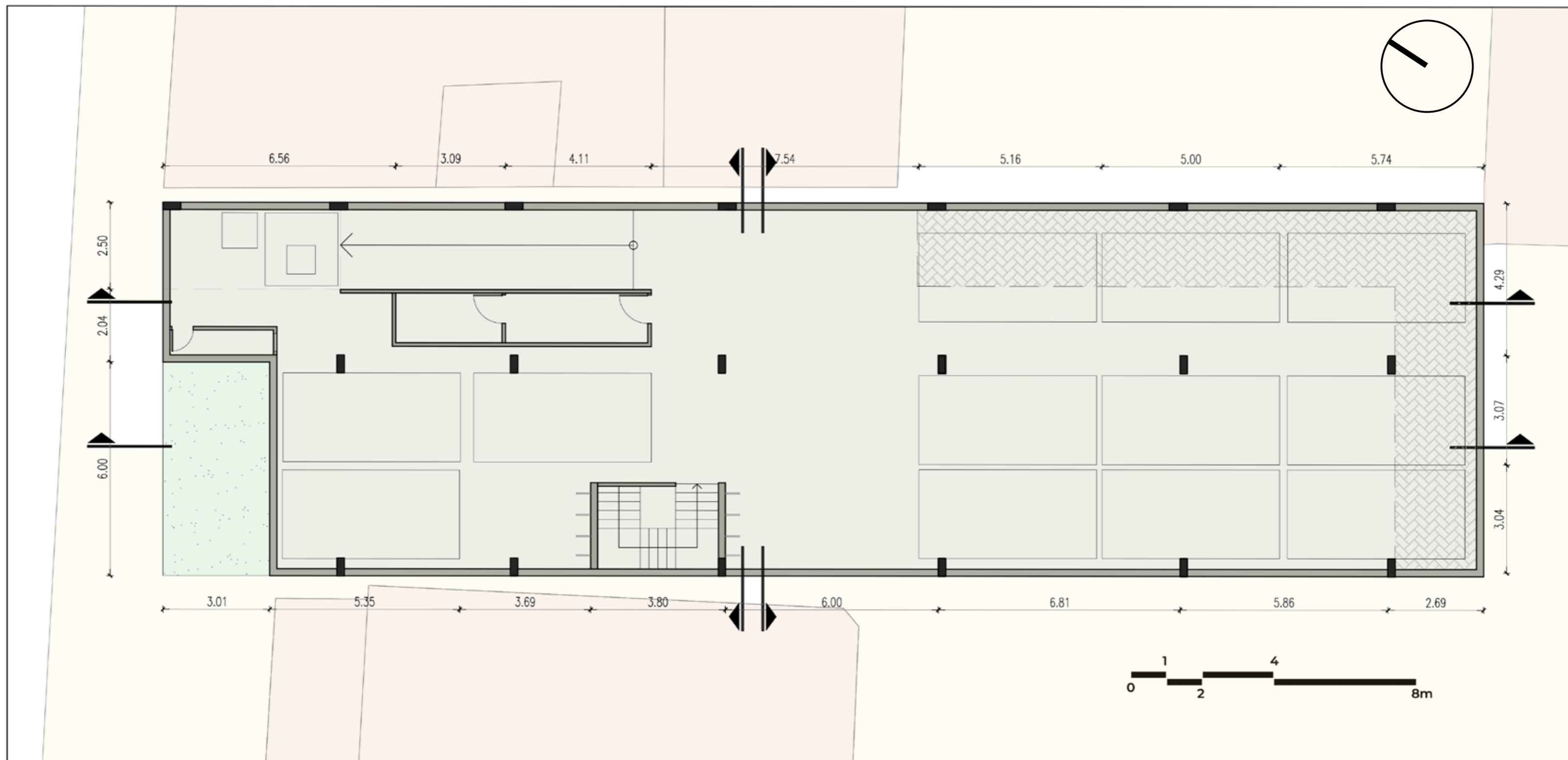
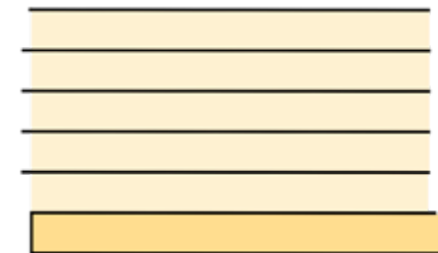




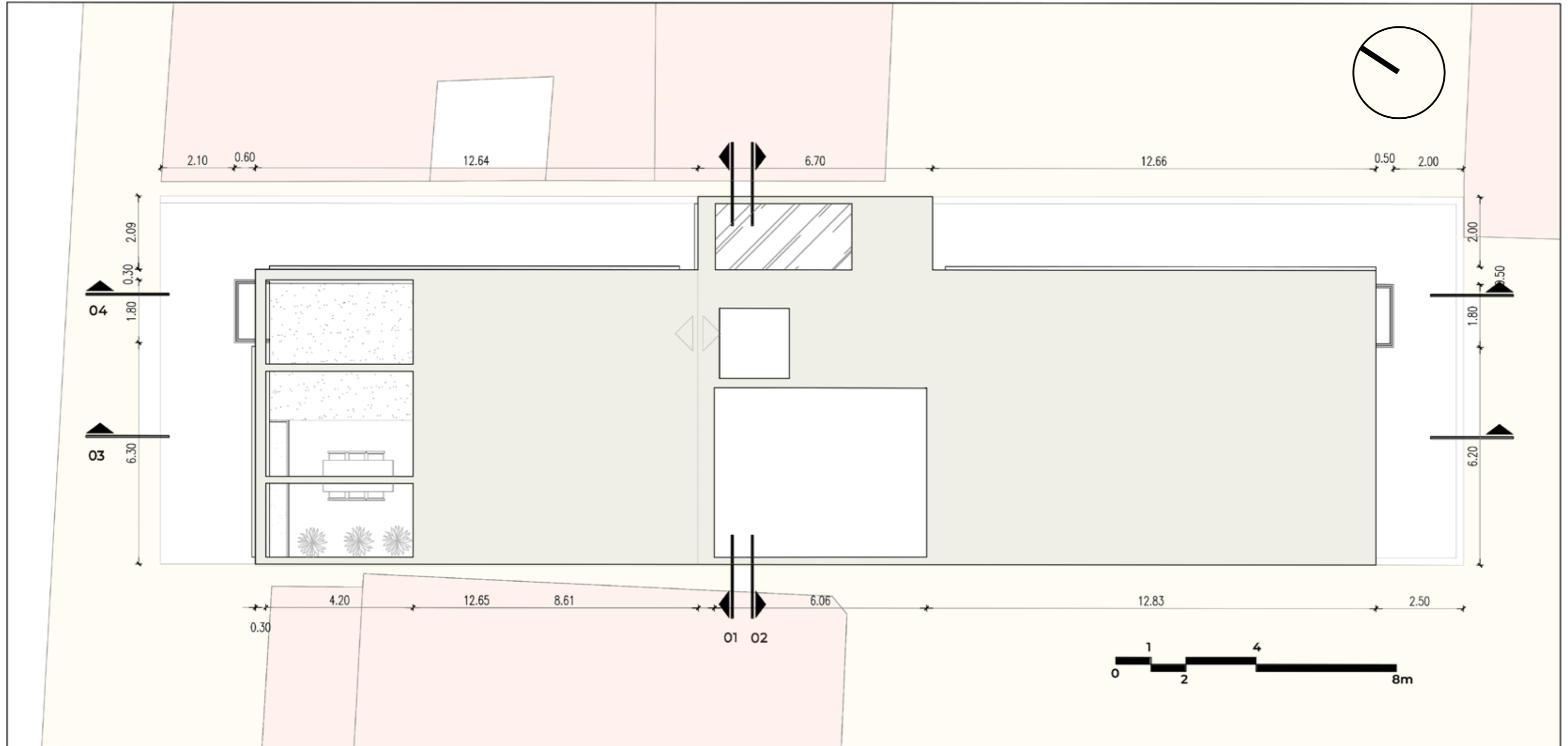
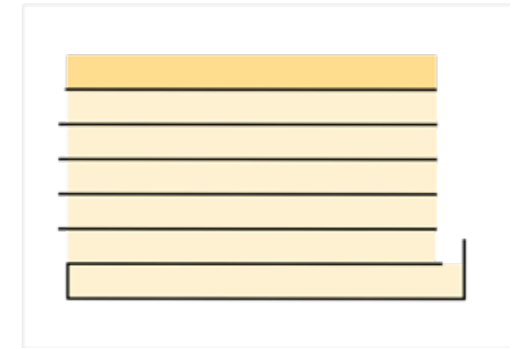
# PLANTA PAV PUC



# PLANTA SUBSOLO



# PLANTA COBERTURA



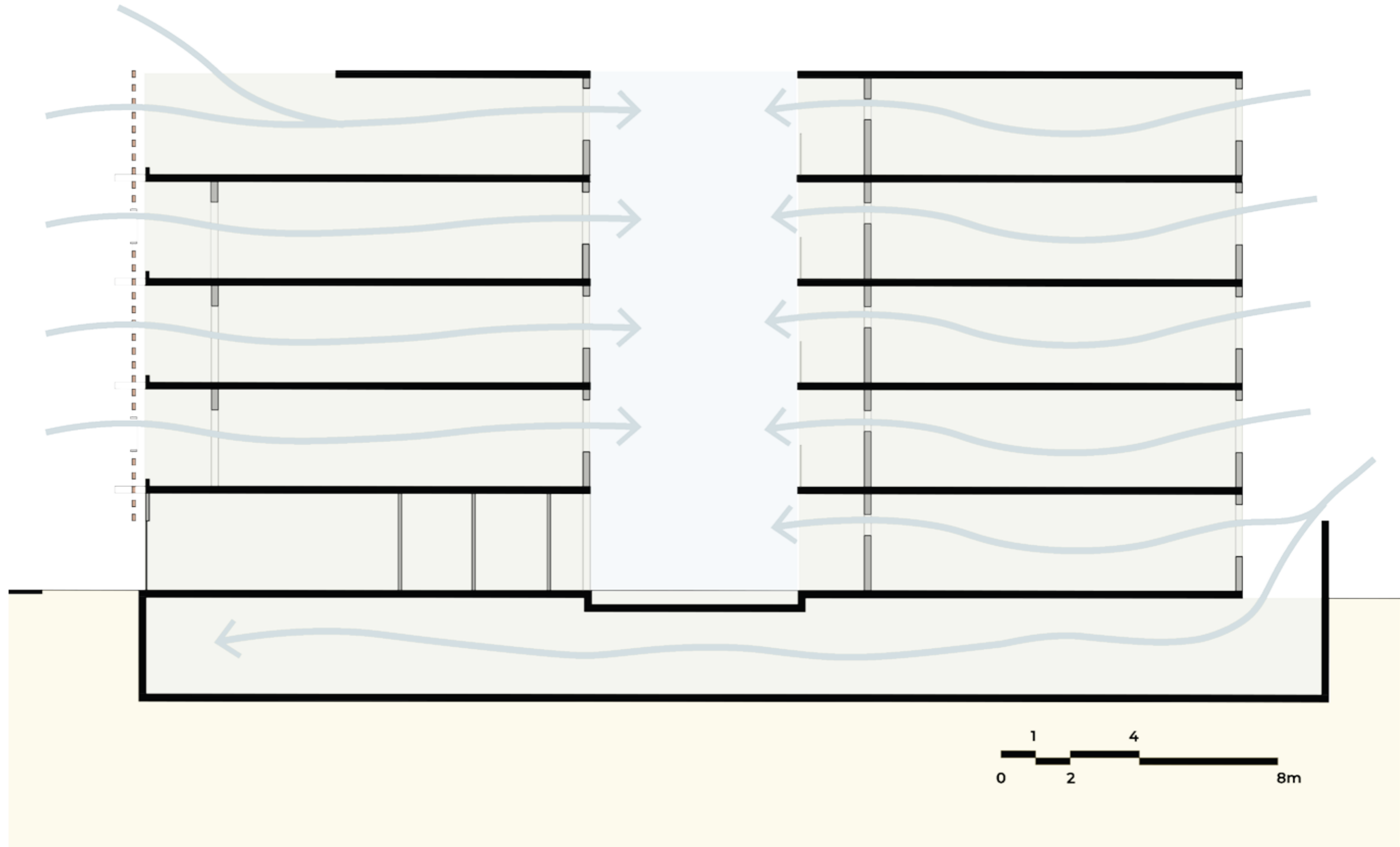
# CORTE 03

Prisma com jardim vertical para uma maior sensação de respiro



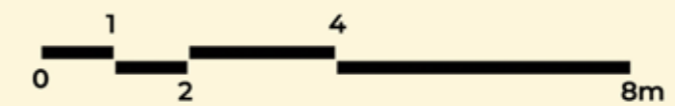
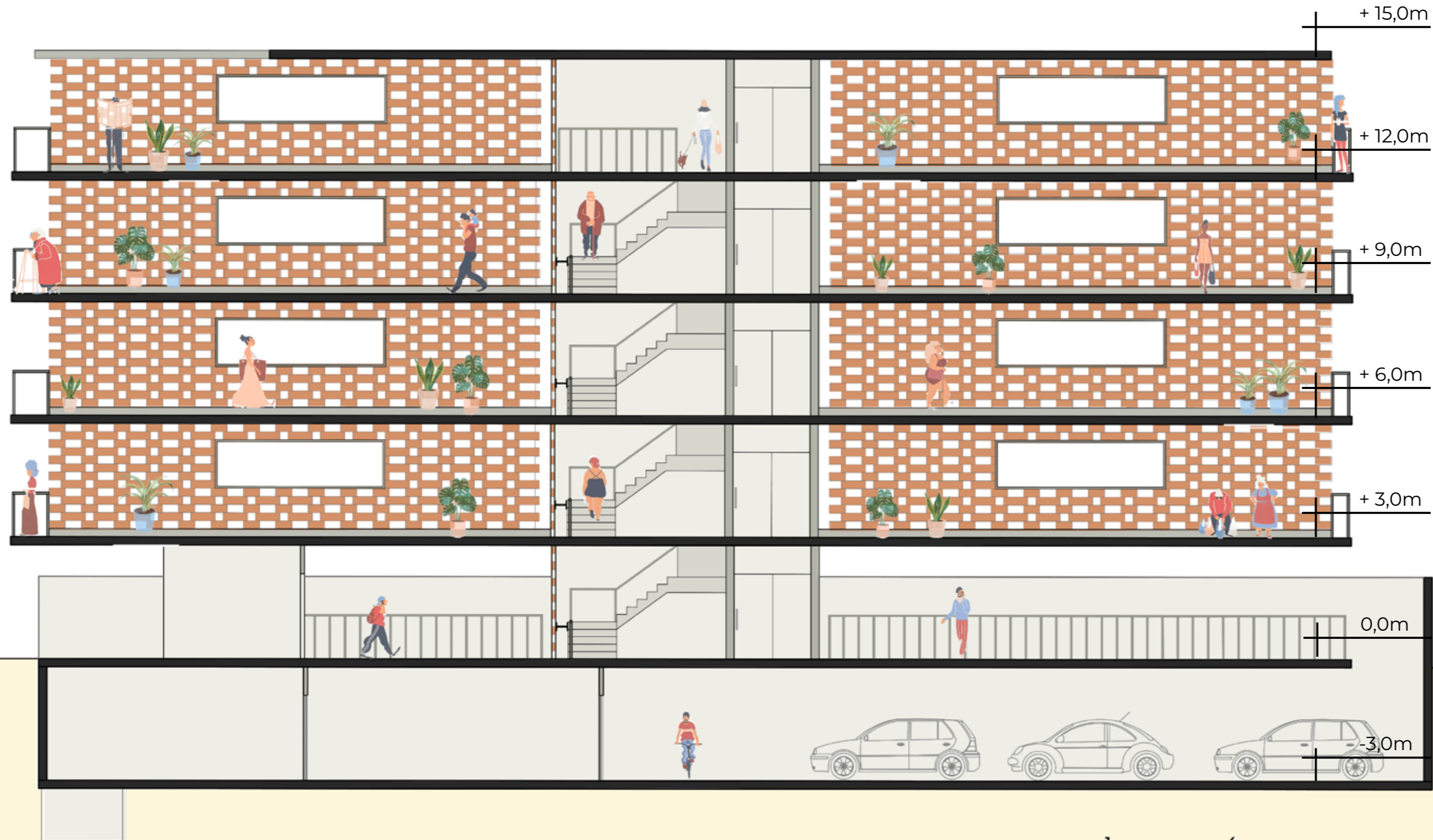
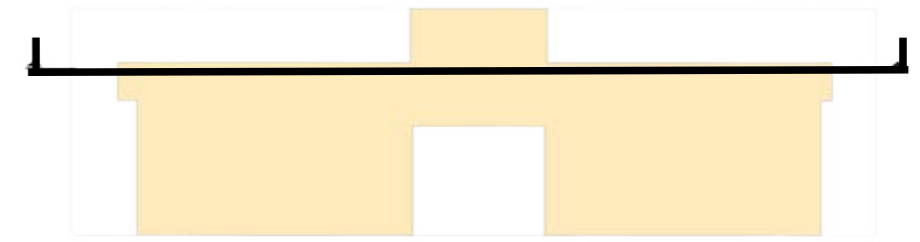
# VENTILAÇÃO CRUZADA

Priorização da ventilação de todos os cômodos dos apartamentos  
Prisma ajuda na circulação e escape desse ar



# CORTE 04

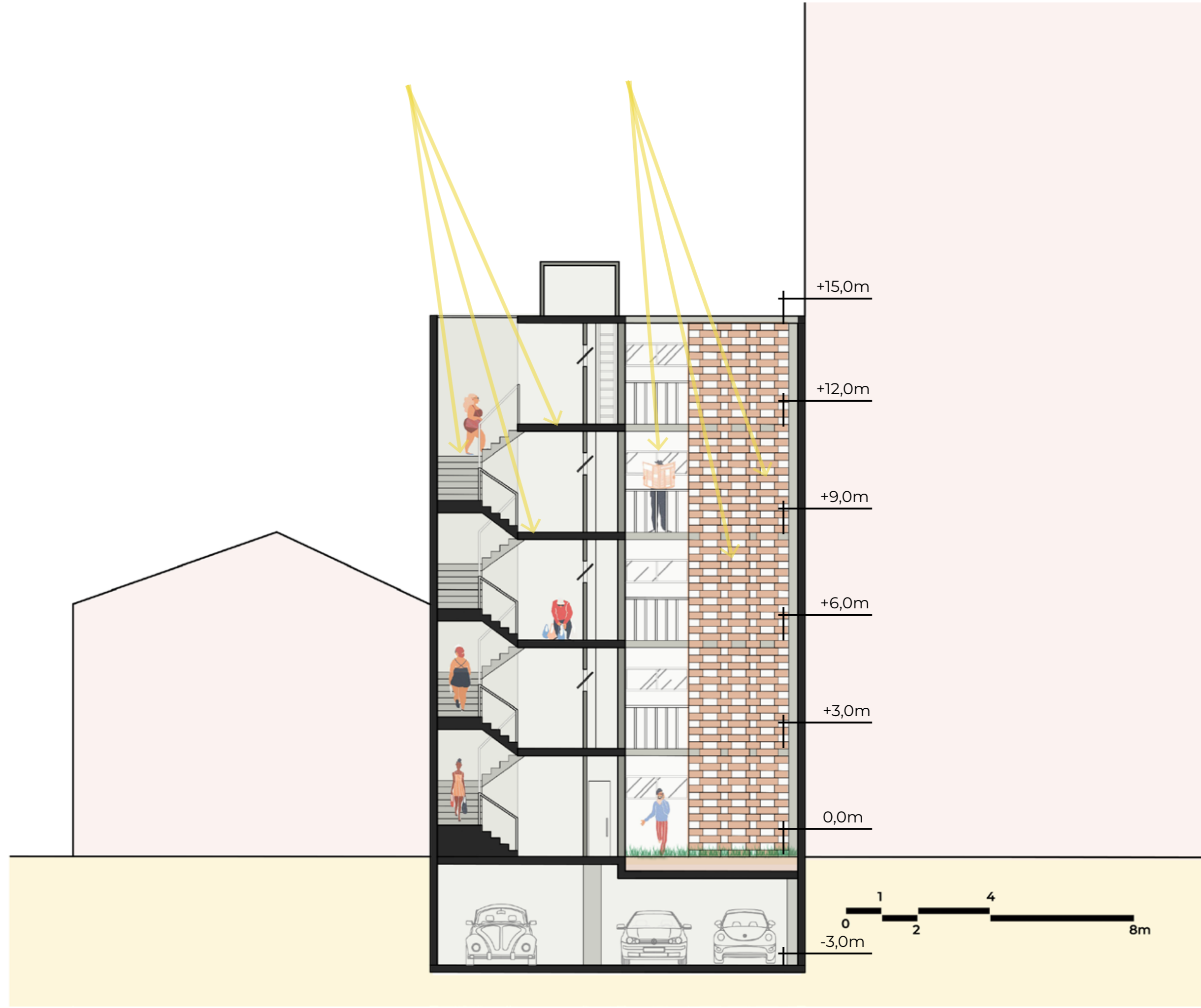
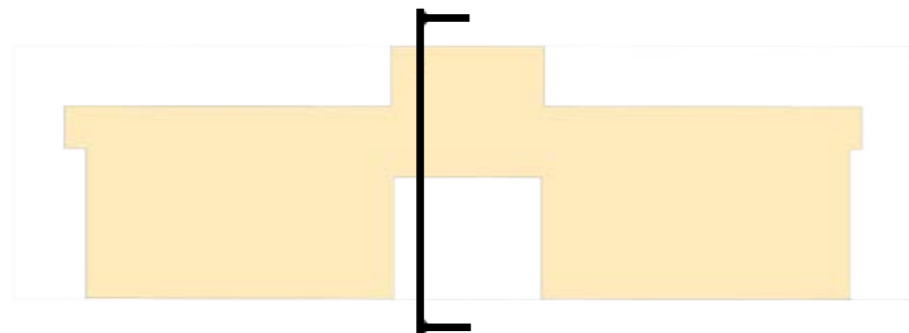
Recortes no cobogó para melhor iluminação e ventilação; Permite visada que ainda é livre





# CORTE 02

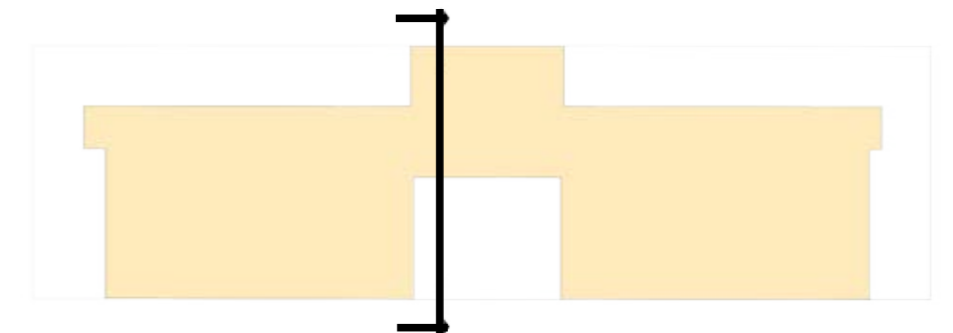
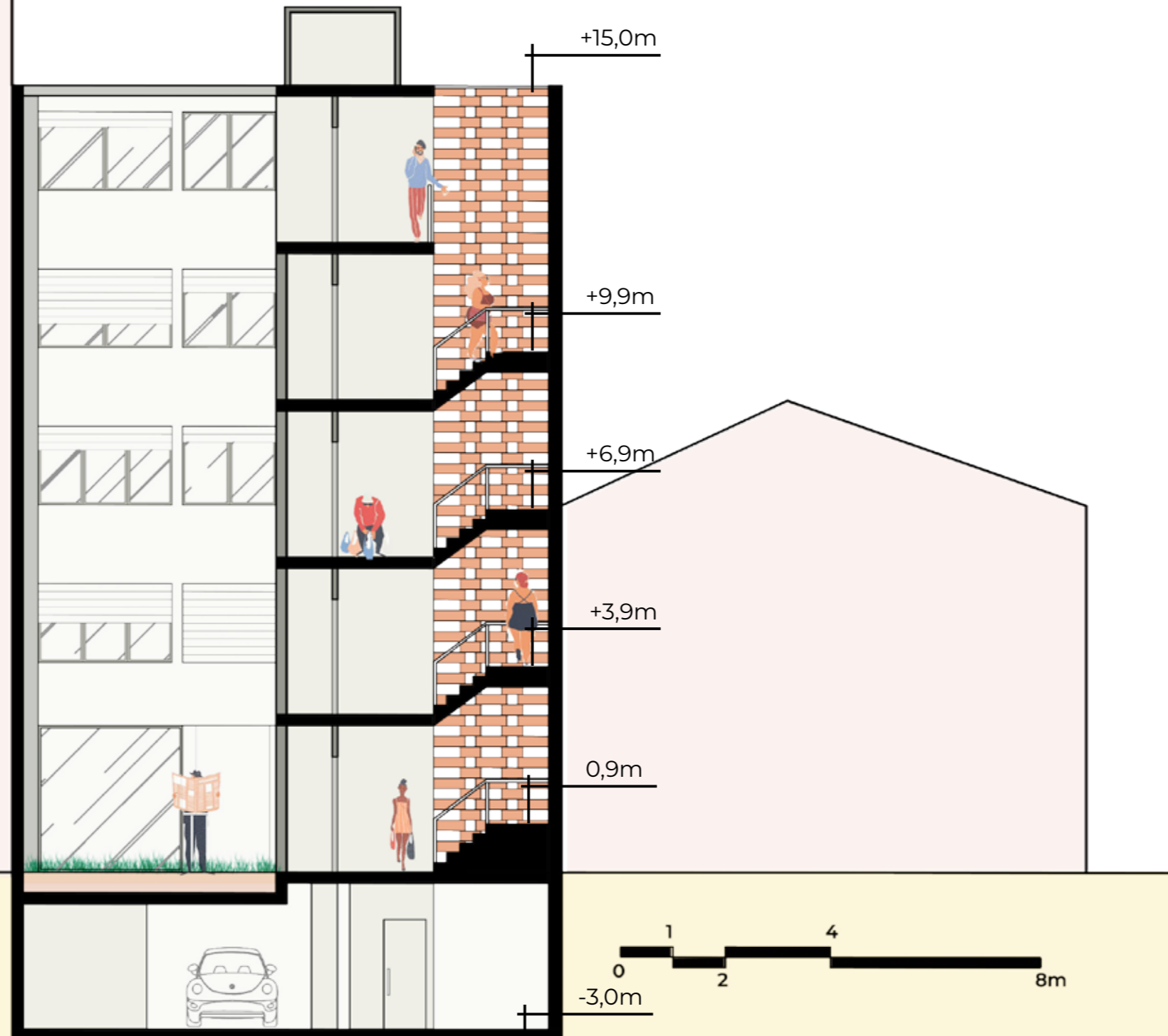
Entrada de luz natural pelo prisma e escada  
Cobogó utilizado no prisma para dar privacidade





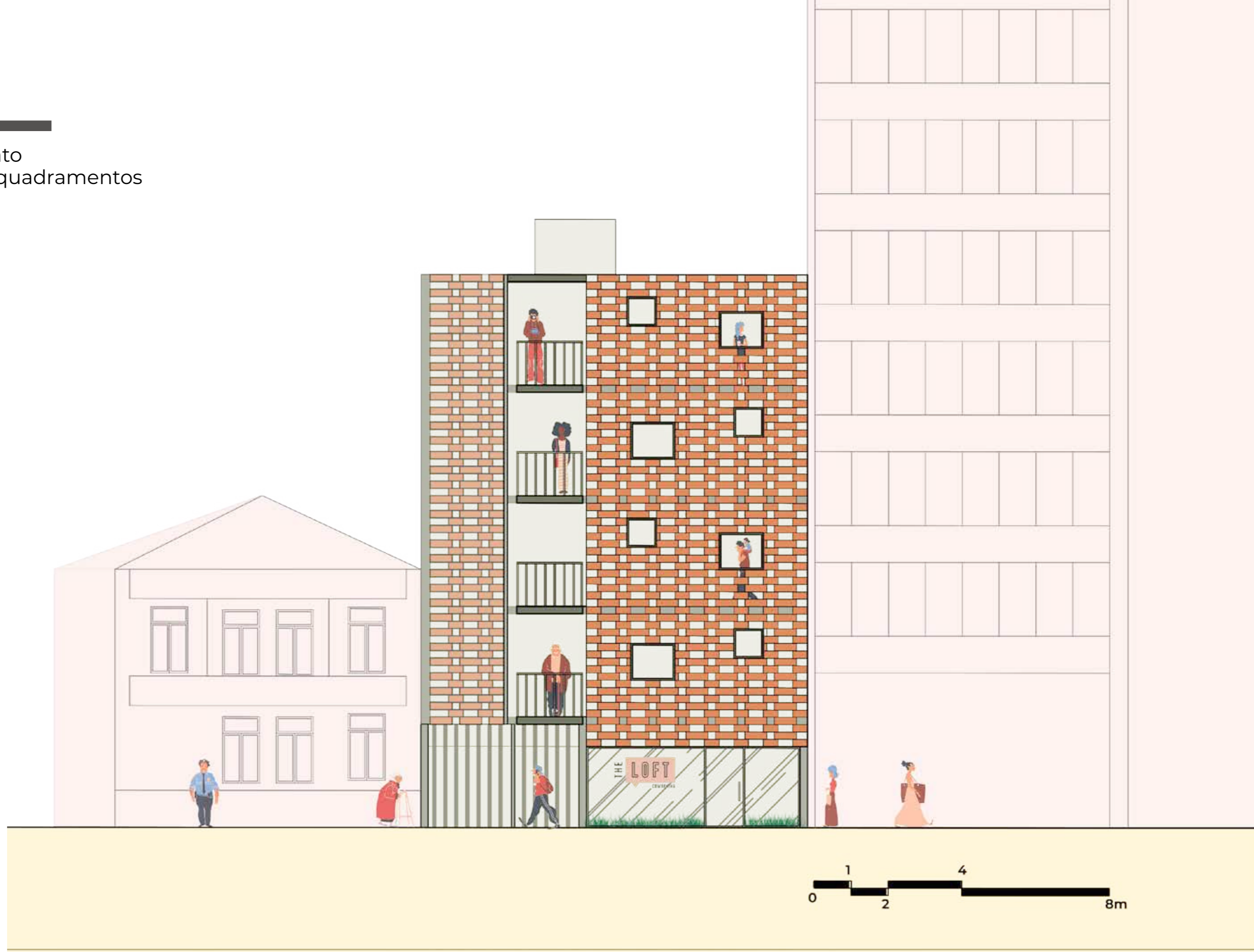
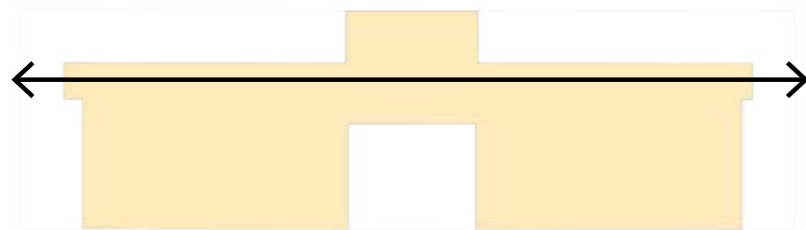
# CORTE 01

Entrada de luz natural e ventilação pelo cobogó da escada  
Venezianas utilizadas nas janelas para dar privacidade



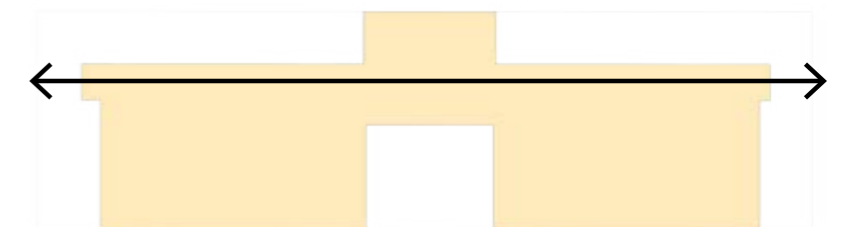
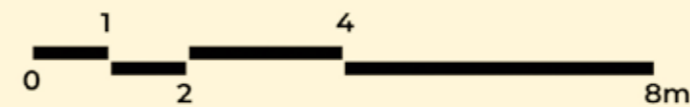
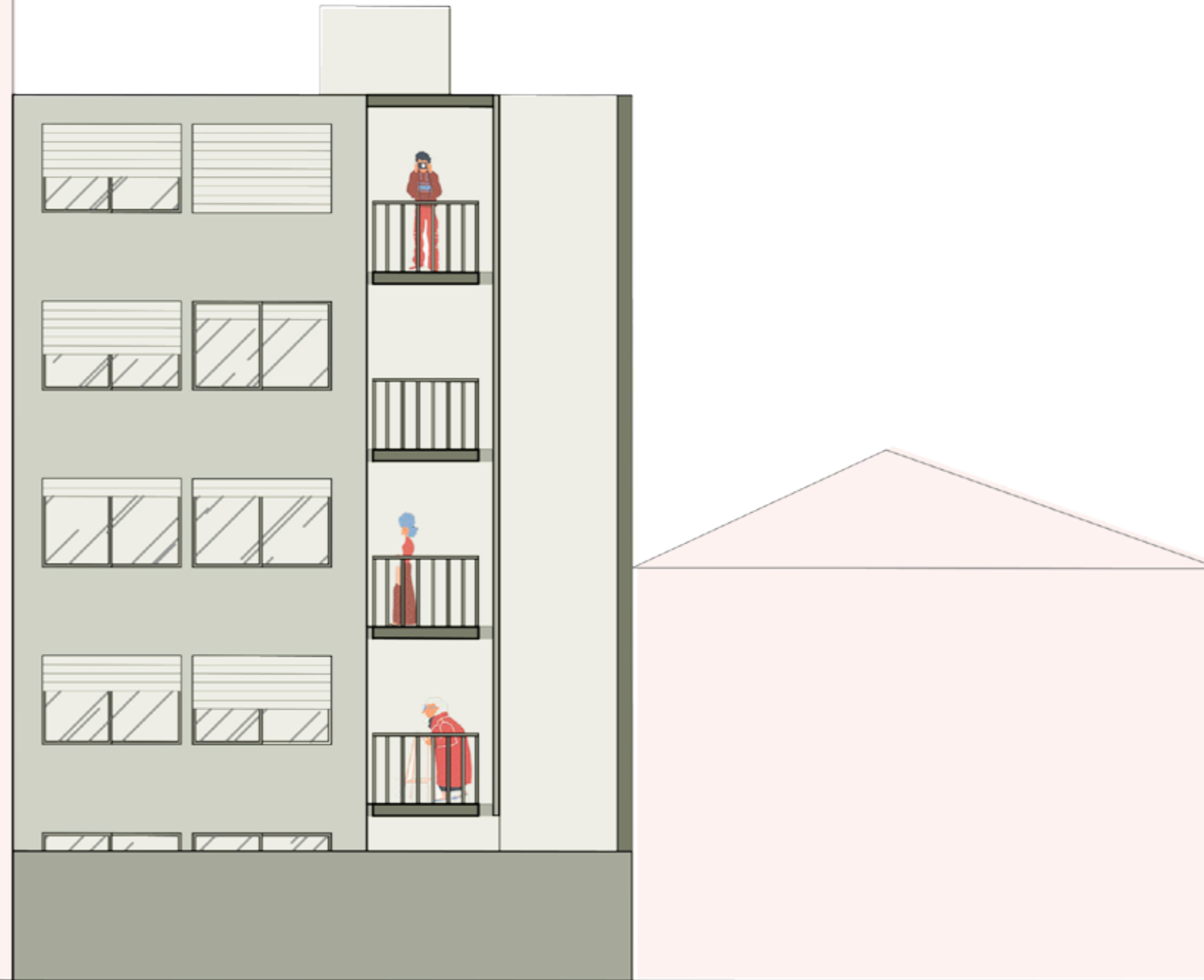
# FACHADA NORTE

Fachada dialoga com seu entorno imediato  
Utilização do cobogó com aberturas e enquadramentos



# FACHADA SUL

Cobogó utilizado no prisma para dar privacidade e para o controle de luz sem prejudicar a ventilação



# ILUMINAÇÃO

---



Efeito do cobogó no interior



Efeito do cobogó no exterior